

# RFM

## THE MIDLANDS MART

— RUGBYFARMERSMART.COM —



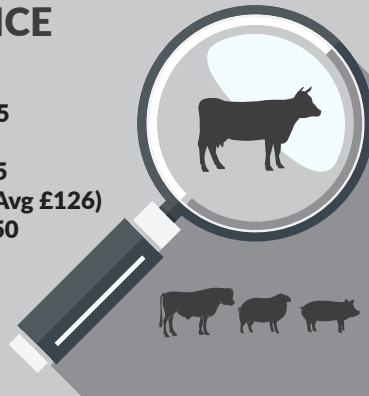
The Charolais Pavilion, Avenue M, Stoneleigh Park,  
Kenilworth, Warwickshire CV8 2RG  
02476 697731 | [www.rugbyfarmersmart.com](http://www.rugbyfarmersmart.com) | 43/139/8013  
Office hours: Monday to Friday - 9.00am - 5.00pm  
Opening Time: Gates open at 5.30am until further notice



## MARKET REPORTS FOR MONDAY 3RD JANUARY 2022

### MARKET AT A GLANCE

**Prime Steers to 300p/kg & £2041**  
**Prime Heifers to 294p/kg & £1865**  
**Prime Bulls to 270p/kg & £1544**  
**OTM Cattle to 219.5p/kg & £1695**  
**Prime Hogg SQQ 287p/kg (1949 Avg £126)**  
**Prime Hogs to 393p/kg & £164.50**  
**Ewes to £185 (1022 Avg £111)**  
**Store Lambs to £110 (307)**



## SATURDAY 15TH JANUARY MACHINERY FARM SALE ON BEHALF OF AN CALCOTT & SON

Catalogues & Entry Forms available by post, email or on the website  
[www.rugbyfarmersmart.com](http://www.rugbyfarmersmart.com) | [admin@rugbyfarmersmart.com](mailto:admin@rugbyfarmersmart.com)

## CATTLE: 82 FORWARD



The feeders clearly using their Holiday period to give extra rations to the feeding Cattle with a good yard full of full meated Cattle on display throughout. A credit to the feeders and a ring full of buyers providing a breathtaking trade. Long live the British independent Wholesalers!!!

### Steers;

Some super Cattle with Page Bros showing the value of the local Cattle outlet when selling super grading Cattle to 300p/kg with Blues to 294p/kg and 288p/kg. Terry Kennealy up with a wagon of cattle as well fed as any, to see 284 and 293.5p/kg. No end of Cattle North of 260p/kg with the dearest perhaps the O+ grade Cattle trading 222 to 230p/kg. The lump showing weight matters whatever the factories tell us!! A super fed Blue Bucket Calf from Tom and Robert Reeve taking £2041!!! Heavy Charolais from W R Keeves & Sons saw £1958 and TV & J Kennealy £1903.

### Heifers;

Top end Heifers with plenty of meat saw 294p/kg and heavy finished heifers to 290.5p/kg and 290p/kg for Terry Kennealy 283p/kg for the ever present F A Osbourne with plenty over 265p/kg. Top gross £1865 and £1830 to Terry Kennealy with others £1792. Page Bros £1776. R Grades regularly north of 250p/kg and O+ 240p/kg. Simply fantastic.

### Bulls;

Meat rewarded with a U- to 270p/kg from J & R Lowe with Limousin. Handy weight Lim R Grades from Pritchett Farms 241p/kg and 239p/kg and little shop Bulls to 229p/kg from the same. Top gross £1545 for Messrs Lowe.

### Cows;

A simply blistering trade seeing young Cows from A K Wilson to 218p/kg and from Hull Farms 191p/kg. Messrs Wilson heavier Simmentals to 182.5p/kg. Old Cows to a massive 175p/kg for Bazadaise from AJ Smith Farming, Bedford. R Grade Cows regularly 150 to 160p/kg. Top gross £1596 for A K Wilson selling to Hartshead Meats, Manchester. Others £1522 for A K Wilson and Messrs Hull £1480.

### OTM;

A overage weighted Steer from Messrs Keeves to £1694.

### Stock Bulls;

Bazadaise from AJ Smith Farming to 140p/kg and £1336.

*Auctioneer: Tom Wrench*

## STEERS & BULLS

Top prices per Head				FA
British Blue	872kg	£2040	R & T Reeve	Y
Charolais x	866kg	£1957	W R Keeves & Sons	Y
Limousin	702kg	£1902	T V & J Kennealy	Y
British Blue	642kg	£1887	Page Bros	Y
British Blue	654kg	£1854	Page Bros	Y

Top prices per Kilo				
Limousin x	582kg	300ppk	Page Bros	Y
British Blue	642kg	294ppk	Page Bros	Y
Limousin x	606kg	288ppk	Page Bros	Y
Limousin	634kg	284ppk	T V & J Kennealy	Y
British Blue	654kg	283.5ppk	Page Bros	Y

## HEIFERS

Top prices per head				FA
Limousin	660kg	£1865	T V & J Kennealy	Y
Limousin	630kg	£1830	T V & J Kennealy	Y
Limousin	618kg	£1792	T V & J Kennealy	Y
British Blue	604kg	£1776	Page Bros	Y
Limousin x	586kg	£1658	F A Osborne	Y
Top prices per kilo				
British Blue	604kg	294ppk	Page Bros	Y
Limousin	630kg	290.5ppk	T V & J Kennealy	Y
Limousin	618kg	290ppk	T V & J Kennealy	Y
Limousin x	586kg	283ppk	F A Osborne	Y
Limousin	660kg	282.5ppk	T V & J Kennealy	Y

## COWS

Top prices per head OTM					FA
Charolais x	772kg	£1695	W R Keeves & Sons	Y	
Simmental	732kg	£1596	A K Wilson	Y	
Simmental	834kg	£1522	A K Wilson	Y	
Simmental	774kg	£1478	D J Hull & Partners	Y	
Top prices per kilo					
Charolais x	772kg	219.5ppk	W R Keeves & Sons	Y	
Simmental	732kg	218ppk	A K Wilson	Y	
Simmental	774kg	191ppk	D J Hull & Partners	Y	
Simmental	834kg	182.5ppk	A K Wilson	Y	



**SHEEP: 3283 FORWARD**

**PRIME HOGGS: 1949**

**FORWARD SQQ 287P/KG AVG £126**

A reasonable show but the Root men completely unable to float the Hoggs out of the fields. Drops in returns after Christmas day and massive falls on the deadweight suggested a hard trade. In truth a slow in Export Sales lead the RFM Team to tailor a decreased entry to suit demand and return an SQQ of 287p/kg with fed lambs at a massive premium and extra accounts for best end lambs today. It is though very worth noting that current demand meant that numbers required seems limited and trade was harder to hold as the sale wore on. That said a trade today to match the deadweight even before they started pulling the price so those that did get numbers sold taking a massive reward. Best lambs and City lambs a real trade today seeing a top dominated by City lambs seeing 393p/kg at 30kg from D Mitchell. Shape from AEJ & FJ Claridge 35.5kg at 361p/kg with D Mitchell 36.5kg 351p/kg from Messrs Mitchell. Export lambs saw 337p/kg at 41kg for Humphrey Livestock with R Woodward 37kg at 334p/kg. Export weights 39 to 43kg regularly 290 to 300p/kg and 43kg and over trading 275 to 285p/kg. Weighted Lambs very dear for best end sorts. Top today 46kg to 343p/kg from Humphrey Livestock whilst RF & J Nichols saw 50kg to 310p/kg and K Crabtree 46kg to 304p/kg. Crabtree, Nichols, Humphrey Livestock. In the lump a top for Exports at £142 for super Beltex from K Crabtree at 45kg. R Woodward 42kg to £139 and Humphrey Livestock 41kg at £138. B C Burton 44kg to £134.50. An all in avg today £126 a marvellous return with a lot of feeders showing light lambs that had come fit early due to the summers growing conditions. Weight pays and the bridge getting every drop covered to see 76kg from S Breakspear at £164.50 whilst Humphrey Livestock took 46kg to £158. K Crabtree £158 and J & R Lowe £157. Today 151 lambs trading over £140!! Finish is essential and from this week onwards we have been instructed that BELLY CLIPPING IS ESSENTIAL!!! Happy New YEAR. Thank you for your custom.

*Auctioneer: Tom Wrench*

## PRIME HOGGS : UNDER 45.5kg SQQ p/kg

Per Kilo			
Beltex x	30.00kg	393ppk	D Mitchell
Beltex x	35.50kg	361ppk	AEJ & FJ Claridge
Texel x	36.50kg	331ppk	D Mitchell
Beltex x	41.00kg	337ppk	Humphrey Livestock
Beltex x	42.00kg	331ppk	R Woodward

Per HEAD			
Texel x	45.00kg	£142.00	K Crabtree
Beltex x	42.00kg	£139.00	R Woodward
Beltex x	41.00kg	£138.00	Humphrey Livestock
Texel x	44.50kg	£134.50	B C Burton
Charolais x	44.00kg	£132.00	A J Breakspear

## PRIME HOGGS : OVER 45.5 kg

Per Kilo			
Beltex x	46.00kg	343ppk	Humphrey Livestock
Texel x	50.00kg	310ppk	R F & J Nichols
Texel x	46.00kg	304ppk	K Crabtree
Texel x	49.50kg	302ppk	R F & J Nichols
Texel x	47.00kg	301ppk	Humphrey Livestock

Per HEAD			
Suffolk x	76.00kg	£164.50	A J Breakspear
Beltex x	46.00kg	£158.00	Humphrey Livestock
Texel x	53.50kg	£158.00	K Crabtree
Charolais x	62.00kg	£157.00	J & R Lowe
Charolais x	59.00kg	£156.50	E J Taylor & Son

**PLEASE COULD ALL VENDORS BOOK IN STOCK,  
EITHER BY A QUICK CALL, TEXT OR EMAIL THANK YOU!**

Office: 02476697731 | Email: [admin@rugbyfarmerssmart.com](mailto:admin@rugbyfarmerssmart.com) | Tom: 07774723758



## CULL EWES: 1027 FORWARD

Simply put bolistic. An avg of £111 absolutely flying and buyers two deep throughout. New Customers today from Devon and also Derbyshire leaving pleased together with our many loyal local Customers. Top today for J A Shaw & Partners, Luton selling Texels to £185 whilst weekly supporter J B Elkington took £180 and H Faulkner £177. Local Rugby man J & R Lowe sold Charolais to £174 whilst Cull Rams from Southam resident B Nichols took £170. Messrs Shaw sold Rams to £169 for Texel and Chrolais Rams from Messrs Lowe a great advert for their Stock Rams seeing £165 on several occasions. Weighted shape today almost exclusively over £160 with smaller shape mostly breaking £150. Suffolks to a top of £147.50 from S & J Farming with £147 from J B Elkington and £136 from G Brown, South Molton. Suffolks all around the £130 mark.. Mules a flyer topping at £141 from B Humphrey with others £139. W Haynes & Son £131.50. Mules in general £116 mark if meated. Trade continues at pace. A likely steady in trade is forecast as Scanning results kick in but trade today a real one for the diary.

**Auctioneer: Tom Wrench**

### EWES

Beltex	£185	J A Shaw & Partners	X Bred	£170	B Nichols
Texel x	£180	J B Elkington	Texel x	£169	J A Shaw & Partners
Suffolk x	£177	H Faulkner & Son	X Bred	£165	J B Elkington
Texel x	£174	J & R Lowe	X Bred	£165	J & R Lowe



## STORE LAMBS: 330 FORWARD

A good selection of quality and a few meaty lambs forward and a packed ringside of buyers insured very good prices for sellers.

Top prices up to £112 for Continentals and averaging over £90, Natives to £106.50

**Auctioneer : Tim Webster**

#### CLEANLINESS OF SHEEP;

WE HAVE NOW HAD INCIDENTS OF SHEEP BEING BINNED AND REJECTED ON THE KILL LINE DUE TO DIRTY BELLIES. IT IS FSA AND TRADING STANDARDS LAW THAT ANIMALS MAY NOT BE SENT FORWARD FOR SLAUGHTER IN A STATE WHEREBY "THE STANDARDISED PROCESS OF DRESSING CANNOT BE COMPLETED WITHOUT TOUCHING DIRT OR DETRITUS, THEN THE ANIMAL SHOULD NOT PASS ANTI-MORTEM INSPECTION". IN SIMPLE TERMS STOCK SHOULD BE CRUTCHED AND BELLIED TO ALLOW THE REMOVAL OF THE LAMBS INTERNAL ORGANS. LAMBS NOT FITTING THIS DESCRIPTION CANNOT BE PRESENTED IN OUR SALES.



## AUTO GATES LTD

Bridge Farm, Holt Lane, Ashby Magna, LE17 5NJ

Trevor 07498993897/01455 202791

Email: [tjautogate@gmail.com](mailto:tjautogate@gmail.com)

Fitted to new or existing gates, wood or steel automated.

Sliding, swinging or cantilever.

### COMMISSION;

SINCE THE SPRING OF 2021 THE BOARD OF RFM LTD HAVE TAKEN THE STEP TO CAP COMMISSIONS ON FAT CATTLE, STORE CATTLE AND PRIME LAMBS. THIS HAS BEEN DONE IN RECOGNITION OF THE FARMING OWNERSHIP OF THE BUSINESS. IT IS THE BOARDS BELIEF THAT THE CURRENT GOOD FORTUNES OF FARMING STOCK SHOULD REWARD THE PRODUCER BEFORE ALL OTHERS AND WITH THIS IN MIND THE COMMISSION CAPS ARE AS FOLLOWS;

FAT LAMBS 3.5% OR £4 MAX

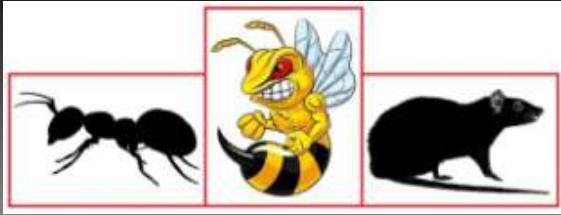
FAT CATTLE 3.5% OR £39 MAX

STORE CATTLE 3.5% OR £30

THE BOARD RESERVE THE RIGHT TO CHANGE COMMISSION RATES WITH 14 DAYS NOTICE AT SUCH TIME AS RUNNING COSTS AND PROFITABILITY OF THE BUSINESS REQUIRE THE SAME. IT IS THE BOARDS HOPE THAT ALL MARKET CUSTOMERS RECOGNISE THAT RFM ARE THE ONLY SALES OUTLET IMPLEMENTING THIS COMMISSION FREEZE AND THE SENTIMENT BEHIND IT IN REWARDING OUR LOYAL SHARE HOLDERS AND CUSTOMERS.

### WANTED

General Book Keeper & Farm Admin  
For large Sheep & Forage Enterprise in  
Chipping Norton  
Call 07813314851



# RDB Pest Control

Reliable | Trustworthy | Fast | Effective  
Competitive Prices

**Ryan Brunt**

**07922 091 459**

**[www.rdbpestcontrol.co.uk](http://www.rdbpestcontrol.co.uk)**

## **Why You Should Choose Us**

- ✓ Cater for Red Tractor and Farm Assurance Schemes
- ✓ Wide ranging experience on Farms with existing agricultural customers
- ✓ Member of Warwickshire Young Farmers
- ✓ Fully qualified - Level 2 RSPH in Pest Control
- ✓ Trustworthy and security vetted
- ✓ Prompt, reliable fast response

## **A selection of sites where I have experience:**

Police Sites • Local Airport • Farms • Warehouses • Offices  
• Industrial Estates • Food Premises • Private Houses  
Country Estates • Building Sites • Local Councils • Schools •  
Day Nurseries • Care Homes



*established over 25 years*

# DEDDINGTON LIQUID WASTE

Experts in the disposal of domestic and commercial liquid waste

We empty  
SEPTIC TANKS • CESS PITS/TANKS • TREATMENT PLANTS  
GREASE TRAPS • INTERCEPTORS



OXFORDSHIRE • NORTHAMPTONSHIRE • GLOUCESTERSHIRE • BUCKINGHAMSHIRE • WARWICKSHIRE • LEICESTERSHIRE

phone: 01327 260905

email: [service@deddingtonliquidwaste.co.uk](mailto:service@deddingtonliquidwaste.co.uk)

[www.deddingtonliquidwaste.co.uk](http://www.deddingtonliquidwaste.co.uk)

## Farm insurance, the way it should be

We're a family-run business and pride ourselves on forging long term relationships with our farming and agricultural clients. Covering the Midlands, South West and South East, we deliver an extensive range of farm, agri business and equine policies tailored to you.

[www.county-insurance.co.uk/farms](http://www.county-insurance.co.uk/farms)

Farm & Equine **01865 844985**

General **01865 842084**

 Follow us @County\_Farm

  
**County**  
Insurance Services

Independent Insurance Brokers County Insurance Services Limited. Address and Registered Office: County House, Glyme Court, Langford Lane, Kidlington, Oxon OX5 1LQ. Authorised and regulated by the Financial Conduct Authority (FCA) (FRN: 597267). Company registered in England No. 08411634

# WE COVER SMALL FARMS, LARGE FARMS AND EVERYTHING IN BETWEEN



From sheep farmers to arable farmers.  
Flower growers to poultry farmers.

NFU Mutual is proud to insure over 75% of UK farms with our Farm Select insurance. But we want more farms to benefit from great cover and local service. NFU Mutual has introduced Farm Essentials insurance - designed to meet the needs of smaller farms.

As your local agency, we are close by and can provide expert advice and hands-on support when you need it.

Call **Coventry Office** on **02476 444519**

NFU Mutual, 6 Eastwood Business Village,  
Harry Weston Road, Binley Business Park,  
Coventry, CV3 2UB



**NFU Mutual**  
FARM INSURANCE

**FINISHING CATTLE? GROWING CATTLE? FEEDING SHEEP?**

**BERRYSTOCK  
FEEDS**



Do you want **HIGH PERFORMANCE, COST EFFECTIVE, FULLY ASSURED and COMPLETE FEEDS?** Then contact **BERRYSTOCK FEEDS:**

Tel: 01788 890320 E-Mail: [john@berryfieldsfarm.co.uk](mailto:john@berryfieldsfarm.co.uk) Web: [www.berrystockfeeds.co.uk](http://www.berrystockfeeds.co.uk)  
BERRYFIELDS FARM, DAVENTRY, NN11 8NP

## **T.A.R HIRE**

- **FOR HIRE:**
- **10 & 14 TON REAR MUCK SPREADERS**
- **12 TON TRAILERS WITH SILAGE SIDES**
- **ROAD SWEEPER**
- **FLAT TRAILERS**
- **GRASS TOPPERS**
- **CONTRACT MUCK SPREADING SERVICES**

### **CONTACT:**

**DAVENTRY (ROB) - 07801791212**

**HINCKLEY (ALAN) - 07802951179**



# RFM

**THE MIDLANDS MART**

—RUGBYFARMERSMART.COM—

## **FORTHCOMING SALES**

**Saturday 15th January - Machinery Farm Sale**

**Thursday 20th January - Sale of Store Cattle**

**Vendors who are wishing to sell stock  
please feel free to contact:**

Tom Wrench - 07774 723758

Tim Webster- 07437 101163

who will gladly make

**A FREE ON FARM VISIT & VALUATION**



**Follow us on social media:**

Facebook & Twitter - @RFMMidlandsMart

Instagram - rugbyfarmersmartltd